



For guidance on managing construction health risks go to www.hse.gov.uk/construction



OPERATORS

1. You must wear the relevant items of personal protective equipment (ppe) appropriate to the type of equipment you are using with this transformer, and the environment you are working in.
2. Anybody who is working near to you will also need to wear appropriate personal protective equipment.

SITE TRANSFORMER

1. Check your site transformer, cables, and all equipment. Do not use anything found damaged – contact the hire company.
2. This transformer can only be connected to the mains supply by a competent electrician. Do not attempt to do it yourself, you could be electrocuted.
3. This transformer will get quite warm in use. Do not block the air vents. Do not put anything on top. Make sure there is enough ventilation.
4. Before using this transformer find out how it functions and ensure you understand the operation of the protection devices.

ELECTRICAL SAFETY

1. You must have a competent electrician to connect this transformer to the mains supply.
2. Do not allow it to get wet. Do not spill drinks on it.
3. The power rating will be shown on the transformer casing. A '5kva' transformer can supply about 4,000 watts; a '10kva' can supply about 8,000 watts. The transformer can supply this power continuously. Do not use any more than this amount. Do not overload the transformer.
4. Check on the power used by each piece of equipment, including any lights, each item should have its power usage marked on it. Add them up to find your total power usage. If in doubt ask your electrician, or contact the hire company.

USING THE SITE TRANSFORMER

1. The transformer has fuses or circuit breakers to protect it in case of overload.
2. If you think a fuse has blown, get your electrician to replace it.
3. If the circuit breakers trip out repeatedly, make sure that you are not drawing too much power from the transformer (see electrical safety, paragraphs 3 and 4).
4. If you still have a problem, check with your electrician or the hire company.
5. Do not attempt to hold or fix the trip switches in the 'on' position.
6. This transformer can only be disconnected from the mains supply by a competent electrician.
7. If your equipment does not work properly do not attempt to repair it. Contact the hire company.

Keep this leaflet in a safe place as it may need to be referred to again.



HAE
HIRE ASSOCIATION EUROPE

Hire Association Europe
2450 Regents Court
The Crescent
Birmingham Business Park
Soleihull B37 7YE

Telephone: 44 (0) 121 380 4600
Fax: 44 (0) 121 333 4109
Email: mail@hae.org.uk
website: www.hae.org.uk

1002

SITE

Safety Guidance

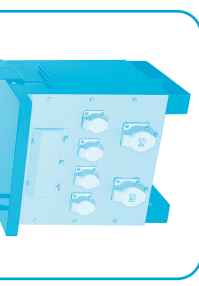
V:122016

Banner

Site Transformer

The rules and procedures in force where people are at work may require the person responsible for this equipment to carry out a specific risk assessment.

It is important to read this entire leaflet and any others issued before you use the Site Transformer



1. Plan the use of the Site Transformer so that it can always be used safely.
2. Electricity is dangerous and must always be used with great care.
3. This site transformer is designed to reduce the mains supply voltage to a lower, safer value. It can supply electricity safely up to its rated power.
4. The site transformer is very heavy and can cause injury or damage if it is not moved carefully.
5. If you have not used a site transformer before, decide carefully where it is best sited. It must only be connected to the mains supply by a competent electrician.
6. The items of personal protective equipment you may need to wear will depend on the type of electrical equipment you are going to use.
7. This transformer must not be used by minors, or by anyone under the influence of drugs or alcohol.
8. This transformer is designed for operation by an able bodied adult. Anyone with either temporary or permanent disability must seek expert advice before using it.

WORK AREA

1. Do not use this site transformer where there is a danger of explosion. It will ignite fumes from petrol, or gas cylinders.
2. Make sure that the area where you set up the transformer is clear and safe, away from other people but convenient to run your cables to various locations.
3. Protect other people from electric shock, put barriers or a fence around the site transformer.
4. Most site transformers will supply electricity at 110 volt and 230 volt. 110 volts is recommended on construction sites and similar environments.
5. You can only use tools and equipment with voltage requirements that match the transformer output.
6. Plan and maintain a safe path for your electric cables.
7. Do not expose the site transformer to rain or let it get wet.

V:122016



Every effort has been made by HAE/EHA to ensure that the information given in this document and supporting material is accurate and not misleading. HAE/EHA cannot accept responsibility for any loss or liability perceived to have arisen from the use of any such document/material. Only Acts of Parliament and Statutory Instruments have the force of law and only the courts can authoritatively interpret the law.

Any unauthorised reproduction – manually or electronically – is STRICTLY prohibited

© Copyright Hire Association Europe October 2010